

Change requires a leap of faith



Hanson Academy

Year Teams

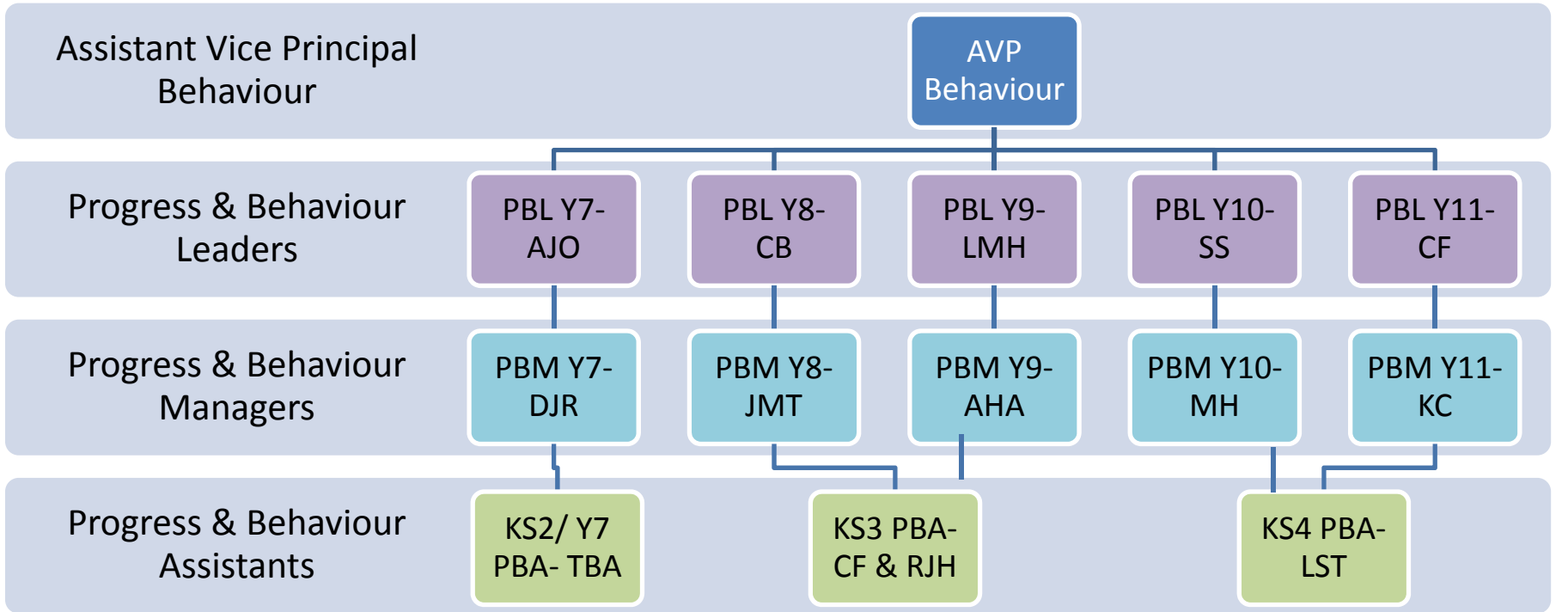
Why are we doing this?

- It is about developing a greater sense of **community**, drawing students of the same ages together and breaking down barriers.
- It is about **help and support** as students look to the experiences of each other to help in their own development.

Opportunities

- ✓ Raise aspirations and focus on achievement
- ✓ Create families and communities
- ✓ Improve relationships within year groups
- ✓ Reduce the incidents of bullying
- ✓ Increase students' ability for informed decision making, eg: GCSE pathways
- ✓ Increase the opportunity for you to take responsibility, particularly lower down the school and mentor/guide particularly in upper school

Pastoral Leadership & Management Structure



Reminders of fresh starts...



The Hanson
Ethos...
This applies to
every day at
school

Behaviour Type	Points
Completed Homework	1 Point
Good Citizen	1 Point
Meeting Targets	1 Point
Good Effort	1 Point
Ready to Learn	1 Point
Good Class Work	2 Points
Star Student	3 points
Good piece of homework	3 Points
Enrichment winner	20 points

Rewards

Double Platinum

500

Platinum

400

Gold

300

Silver

200

Bronze

100 House Points

Reminder

**If your
behaviour is
stopping
others from
learning**

Interrupting

Dream

T 1

**You will be told
you are on T1:**

**A formal
warning will be
given and
planner
removed from
student**

Poor attitude

Believe

T 2

**You will be told
you are on T2:**

**Moved within
class, it will be
written in the
planner and
recorded on the
system**

Defiant

T 3

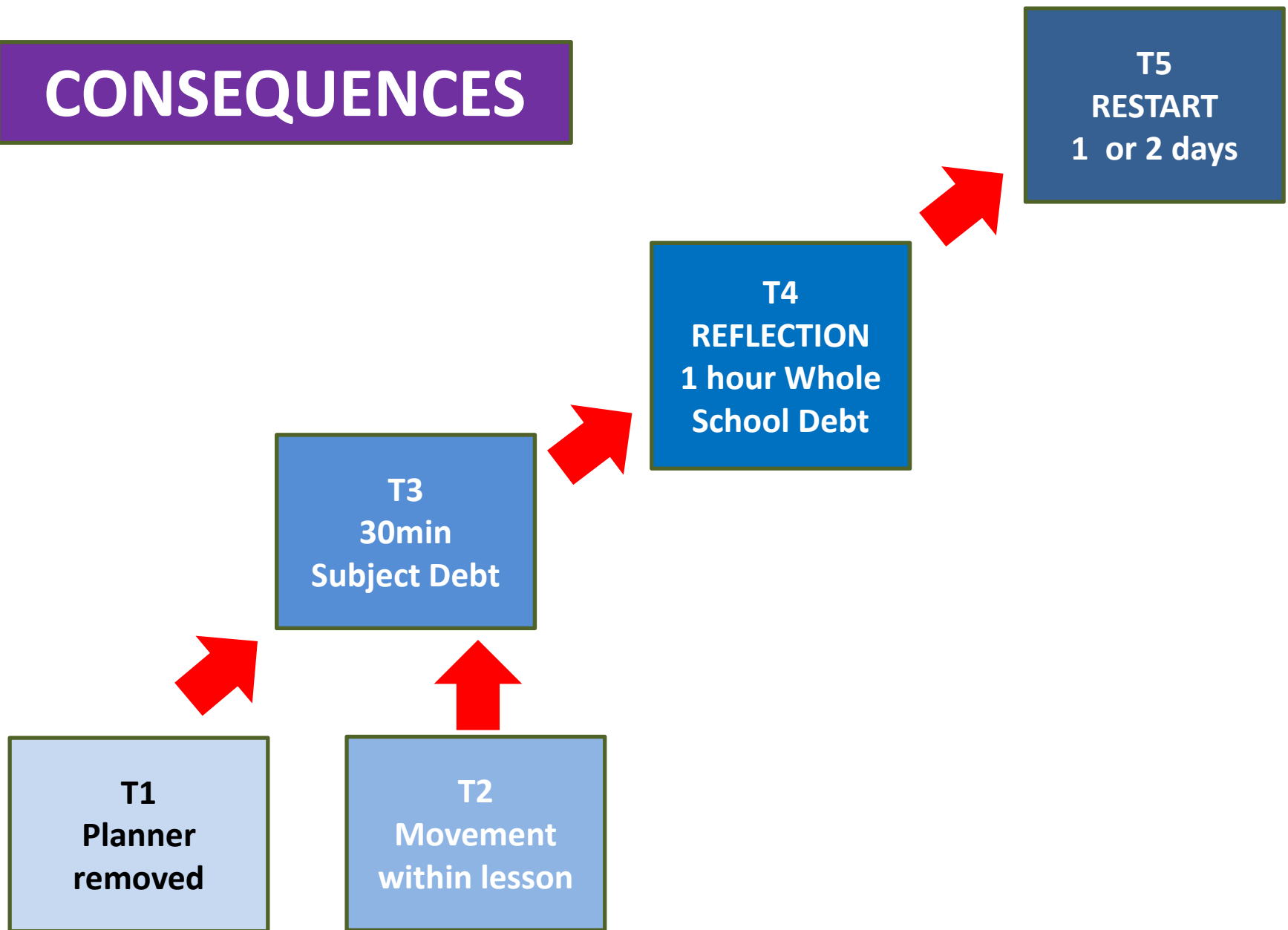
**You will be told
you are on T3:**

**Removed from
lesson into the
referral room, a
30min
detention
will be given
and recorded on
the system**

Interrupting

Achieve

CONSEQUENCES



Dream

Believe

Achieve

Student Achievement First

A student that has been on a Level One 3 times = Referral to Progress & Behaviour Team and Level 2 Report

A student that has been on the Level 2 Report 2 times = Level 3 Report.

A student that has been on the Level 3 report twice = Last chance and Level 4 Report

A student that has failed Level 4 report = Behaviour Contract & referral to BACS

REWARDS sit alongside this.

WARNING:

10 behaviour points = Tutor discusses behaviour points with the student and makes a note in their planner. Form Tutor contacts home or asks Progress & Behaviour Assistant to make the call. Recorded on SIMs as a Pastoral Action.

LEVEL ONE REPORT:

- 15 behaviour points = green tracker report (2 weeks)
- Tutor discusses with the student, sets targets, makes a note as Pastoral Action on SIMS and either contacts home or asks Progress & Behaviour Assistant to make the call.
- If the student loses the report card they fail that week.

Intervention from Tutor

Move up if successful

LEVEL TWO REPORT:

- Failure of Level 1 report = T4 and referral made to Progress & Behaviour Manager.
- Progress Team contacts home and issues a Level 2 Report (2 weeks). Targets are set in agreement with the student and parent. Progress & Behaviour Manager and Parent signs the report card each day to keep communication open. Recorded on SIMs as Pastoral Action.

Intervention from Progress & Behaviour Team

Move up if Successful

LEVEL THREE REPORT:

- Meeting arranged with parent and student to put a Level 3 report in place.
- Progress & Behaviour Leader issues a Level 3 Report (2 weeks). Targets on the report card reflect the targets on the Level 3 report. Recorded on SIMs as Pastoral Action.
- Progress & Behaviour Leader and Parent signs the report card each day to keep communication open.
- Review date / meeting arranged with parent to evaluate Report. (This Plan is a live document and will keep changing depending on the identified need of the student). Accessed as Linked Document on SIMs.

• Intervention from Progress & Behaviour Team

LEVEL FOUR REPORT/ LAST CHANCE:

- Failure of the Level 2/ Level 3 Report = One day Restart and meeting arrange with parent, Assistant Vice Principal, Progress Team and Progress Leader. Contract in place outlining school expectations and final steps if the student fails. Recorded on SIMs as Pastoral Action.
- LAST CHANCE report card (2 weeks). Targets on the report card reflect the targets on the new AWESOME Plan. Review date / meeting arranged with parent to evaluate the Plan. Progress Team sign the card at the end of each day.

• Intervention from Assistant Vice Principal and Progress & Behaviour Team

Move up if Successful

BEHAVIOUR CONTRACT = 3 day internal / external exclusion and meeting arranged with parent, Asst Vice Principal and Deputy Principal. Discussed at BACs. Achievement Centre - Specialist in-house Inclusion Unit until full re-integration.

Intervention from Assistant Vice Principal & Deputy Principal

Referral made to BACS – Managed Move / PRU / District PRU / Permanent exclusion. Leave Hanson School.

During the Summer months...

- Bring a bottle in to school & keep drinking plenty of water so as not to dehydrate in this hot weather
- Eat sensibly & not miss or skip meals during this hot weather
- You are allowed to remove blazers in lessons during this hot weather, back on when on the corridors